

We optimize your ship performance

Although it is widely recognized that the shipping industry is highly fuel efficient, its global presence and expected rapid growth makes it a major consumer of energy and a substantial source of carbon emissions.

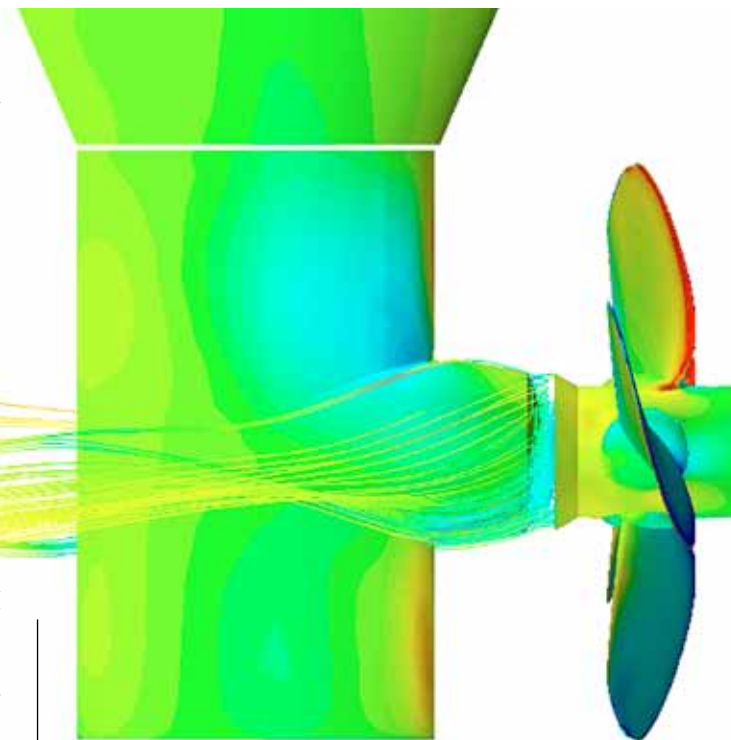
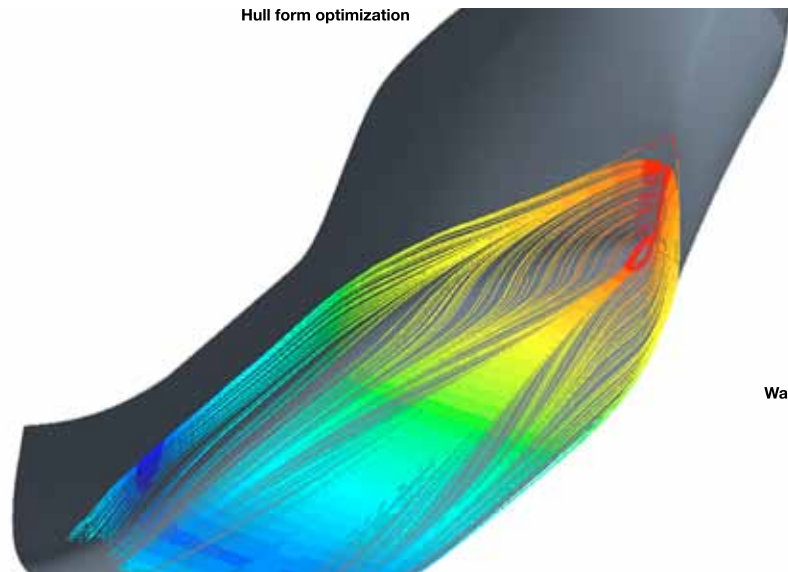
A major development occurred in July's 2011 session of the IMO, where the parties to MARPOL Annex VI adopted amendments to Annex VI Regulations for the reduction of air pollution from ships. These amendments focus on the energy efficiency of large ships and mandate an increasingly stringent

efficiency index for the majority of new vessels to be constructed.

Today's industry-leading ships are about twice as efficient as industry laggards, and even more regulatory measures are expected due to improvements in technology and efficiency of new ship components.

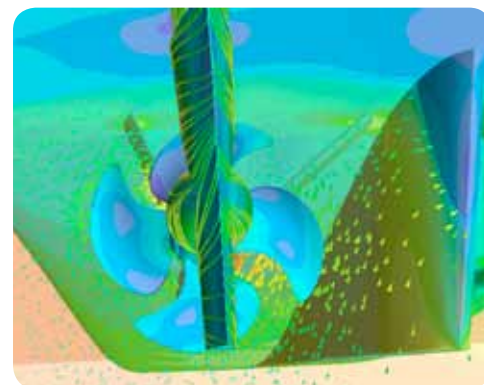
The gap in efficiency between new and existing vessels represents a large potential for improvement that local governments and regulatory bodies like IMO will now be tapping into.

Hull form optimization



Twisted rudder

At VICUSdt, we have developed a portfolio of advanced services over the years that can optimize the performance of vessels and increase fleet efficiency – enabling you to stay one step ahead of the wave.



Wake adapted propeller and rudder

We are VICUSdt

VICUSdt is an engineering design and analysis service company that allows our clients easy access to a highly skilled engineering resources within shipbuilding, shipping, offshore and energy industries.

Our breadth of experience coupled with an adaptive and flexible approach means that we can react to time sensitive challenges, working with you when you need us. Our engineers, naval architects and project managers are highly qualified full-time employees offering a diverse range of technical skills.

Sea trials



Existing vessels

Concept

PROBLEM INVESTIGATION
OPERATIONAL PROFILE

Basic

EXPRESS ANALYSIS
ON BOARD DATA COLLECTION
ENERGY AUDIT
MACHINERY ASSESMENT
TRIM OPTIMIZATION
EEDI AND EEOI VERIFICATION

Final

ESD DESIGN
BOW RETROFITTING
CP BLADE REDESIGN
PROPELLER REDESIGN
SEA TRIALS ON DELIVERY

New building

HULL CONCEPT & DIMENSIONS
PROPULSION SOLUTIONS
PRELIMINARY POWERING PREDICTION
OPERATIONAL PROFILE

PROJECT ENERGY CONSULTANCY
TECHNOLOGY ASSESMENT
PERFORMANCE SIMULATOR
POWERING PREDICTION
SEAKEEPING
EEDI AND EEOI VERIFICATION

ESD DESIGN
HULL OPTIMIZATION
PROPELLER OPTIMIZATION
SELF PROPULSION
SEA TRIALS ON DELIVERY



Variable speed generator



Bulbous bow retrofitting



Powering prediction & flap design



Propeller & ESD design



Trim optimization



Twisted rudder & hull optimization

Real power measurement



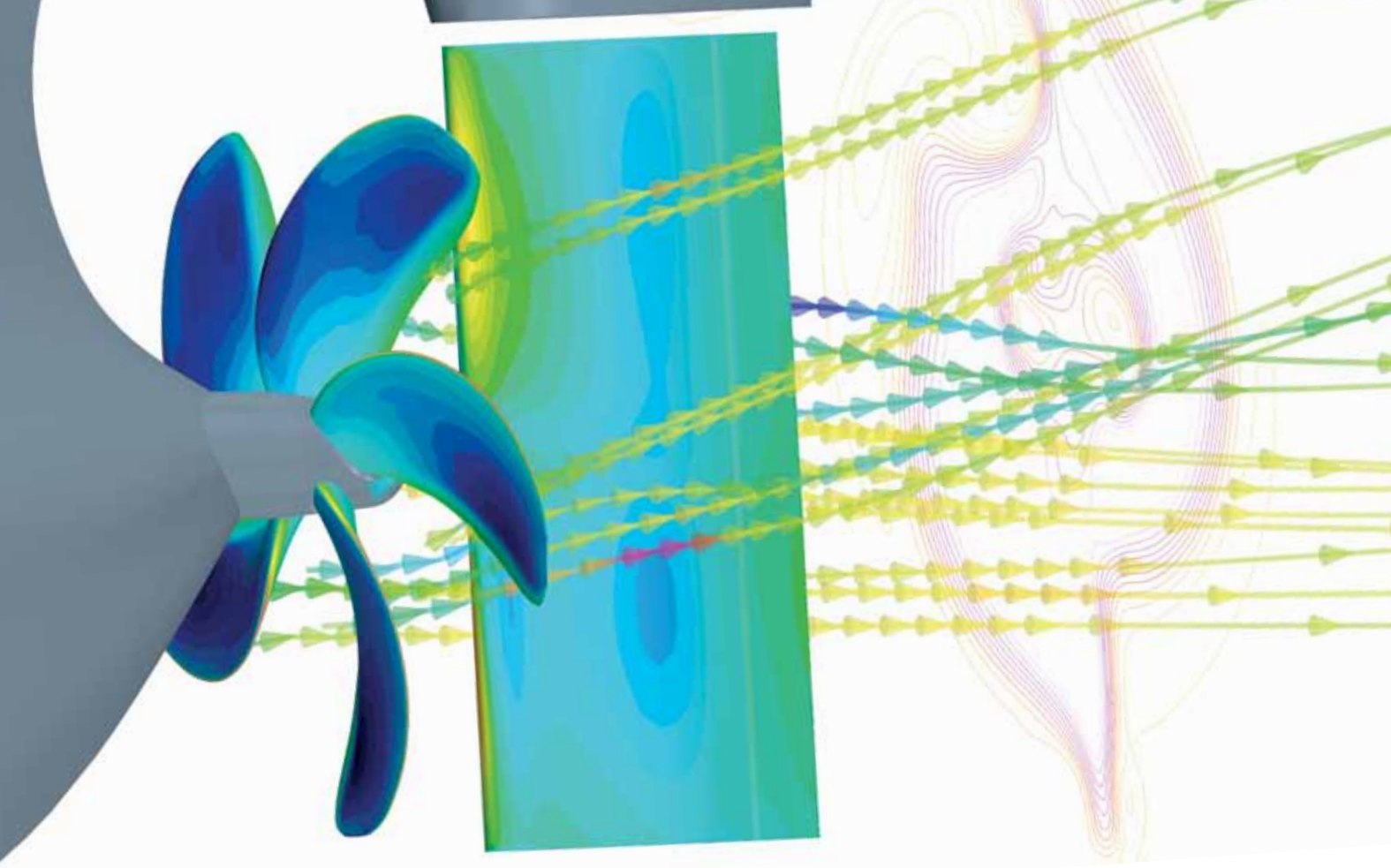
Bollard pull analysis



Seakeeping & DP analysis

more information
www.vicusdt.com



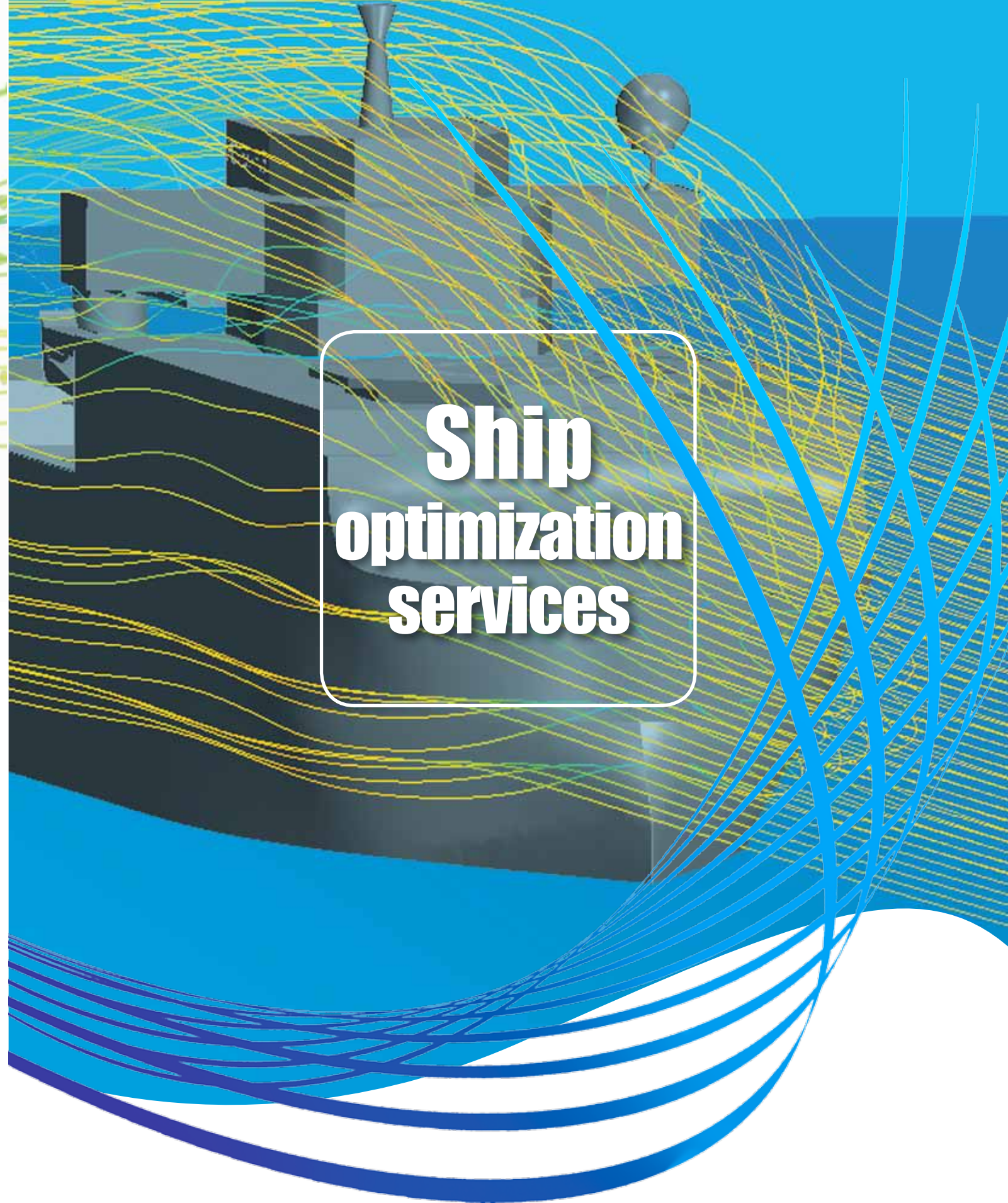


We provide solutions
for complex engineering challenges



Av. Beiramar, 77 - 1º - 36202 VIGO - SPAIN - Tel: (+ 34) 886 11 35 47 - email: info@vicusdt.com - www.vicusdt.com

GRUPO EMENASA



**Ship
optimization
services**

